

BOLTON PRO

GASOLINE



PREMIUM PRESSURE WASHER LVÉRISATEUR PREMIUM

General Instruction Manual

**Model
192050**

EPA

QUESTIONS? 1 (800) 705-4454

Mon - Fri 8:00 am - 5:00 pm
Canada and United States (except holidays)

Our Customer Service staff are ready to provide assistance. If a part is damaged or missing, most replacement parts ship from our facility in two business days.

For immediate help with assembly, or for additional product information, call our toll-free number: 1 (800) 705-4454.

SAVE THIS MANUAL

**You will need this manual for safety instructions, operating procedures, and warranty.
Put it and the original sales invoice in a safe, dry place for future reference.**

INTRODUCTION

THANK YOU FOR PURCHASING THE PRESSURE WASHER. WHETHER YOU ARE DOING LIGHT CLEANING AT HOME OR NEED THE POWER TO DO THAT HEAVY JOB, THE PRESSURE WASHER MAY GIVE YOU THE POWER YOU NEED. YOUR PRESSURE WASHER WILL SERVE YOU FOR YEARS TO COME. FOLLOWING PROPER BREAK IN PROCEDURE, BY USING RECOMMENDED SET-UP AND OPERATING PROCEDURES, AND PERFORMING PREVENTIVE MAINTENANCE AS PER SPECIFIED IN THIS AND THE ACCOMPANYING ENGINE MANUAL. MOST IMPORTANT IS THE SAFETY OF YOU AND THOSE AROUND YOU. REMEMBER THAT WHILE THE PRESSURE WASHER GIVES YOU THE POWER YOU NEED TO COMPLETE YOUR JOB, SAFETY RULES SHOULD ALWAYS BE FOLLOWED. THANK YOU FOR SELECTING OUR PRODUCT.

GOOD CLEANING!

Safety Symbols

The following symbols are used throughout this manual. Follow listed instruction to ensure your safety.

 DANGER


Indicates an imminently hazardous situation which, if not avoided, will result in death or serious injury

 WARNING


Indicates a potentially hazardous situation which, if not avoided, could result in death or serious injury.


 CAUTION

Indicates a potentially hazardous situation exists, which if not avoided, may result in minor or moderate injury or product damage.


 NOTE
Indicates operation or maintenance information helpful to improve performance or operation.


The following safety Precaution apply whenever using, storing or servicing Pressure Washer or their engines to reduce the possibility of personal injury. Overlooking or ignoring these precautions can lead to personal injury or product damage.


WARNING



- Read this manual carefully. Know your equipment. Consider applications, potential hazards and limitation for your unit.
- This equipment is designed for specific applications. Do not modify or use for any application other than which it is designed.
- Store the Pressure Washer in a well ventilate area with the fuel tank empty. Fuel should not be stored near the pressure washer.
- Never operate under these condition:
 - a. A noticeable change in engine speed.
 - b. A noticeable loss of pressure.
 - c. The engine misfires.
 - d. Smoke or flames are present.
 - e. Enclosed compartment.
 - f. Excessive vibration.
 - g. Rain or inclement weather.
- Water spray must never be directed towards any electric wiring or directly towards the pressure washer.
- Do not allow the hose to come in contact with hot muffler.
- Equipment must be placed on a firm, supporting surface.
- Remove the spark plug or cable from the spark plug to prevent accidental starting, when not in use, or prior to detaching the high pressure hose.
- Keep the pressure washer clean and free of oil, mud and other foreign matter.
- Do not water loose clothing, jewelry, or anything that may be caught in the engine.
- Never direct spray at people or pets.
- Never allow children to operate pressure washer at any time.
- Use both hands to control the wand.


WARNING



- Do not touch nozzle or water spray while operating.
- Wear safety goggles while operating.
- Only approved hoses and nozzles should be used.
- The trigger gun must not be jammed in position during operation.
- Never tie knots or kink the high pressure hose.
- All hose connections must be properly sealed.
- Prior to starting the pressure washer in cold weather, be sure ice has not formed in any part of the equipment.
- Use only recommended chemicals.
- Outdoors use only.
- Place the pressure washer away from cleaning site during operation.
- To prevent accidental discharge, the spray gun should be secured by locking trigger when not in use.
- Do not run the pressure washer for more than five minutes without depressing the trigger or damage to the pump may result.
- Check the fuel system periodically for leaks or signs of deterioration such as chafed or spongy hose or missing clamps, or damaged tank or cap. All defects should be corrected before operation.
- Do not touch hot muffler.
- Service, operate and refuel under the following conditions.
 - a. Good ventilation.
 - b. Refuel the pressure washer in a well lighted area.
 - c. Avoid fuel spills and never refuel while the pressure washer is running.
 - d. Avoid an ignition source when refueling.
 - e. Use lead free fuel with a minimum of 85 octance.
- Do not smoke near the pressure washer.
- Do not use damaged high-pressure hose.

SAFETY FEATURES

THERMAL RELIEF VALVE

A thermal relief valve is provided to protect the pump from overheating if the spray gun is closed for an extended length of time or the nozzle becomes plugged. However, it is intended to be used as a backup system and every effort should be made to not permit the pump to heat up.

We recommend turning the pressure washer off if it will not be used for more than five minutes. This saves wear on the unit, reduces fuel consumption and extends the life of the pump by avoiding heat.



SAFETY LOCK OFF LATCH

To prevent accidental discharge of high pressure water, the safety latch on the trigger should be engaged whenever the pressure washer is not in use. (Refer to Operating Instruction)

LOW-OIL SHUT DOWN

Some engines are equipped with low-oil shut down..If the engine oil lever becomes lower than required, the pressure washer will automatically shut off. (Refer the engine manual for this feature.) This protects your pressure washer engine from operating without proper lubrication.

If the pressure washer engine shuts off and the oil level is according to specification, check to see if the pressure washer is setting at an angle that forces oil to shift. Place on an even surface to correct this. If the engine fails to start, the oil level may not be sufficient to deactivate low oil level switch. Be sure the sump is completely full of oil.

 CAUTION

The pump will overheat and may be damaged, or cause damage if allowed to circulate more than five minutes.

BEFORE OPERATION

NOTE: The engine and pump on your New Pressure Washer will often have improved performance after a break in period of several hours.

PRE-START PREPARATION

Before starting the pressure washer, check for loose or missing parts and for any damage which may have occurred during shipment.

HOSE AND GUN ASSEMBLY

NOTE: Align threaded connections carefully to prevent damaging threads during assembly. Tighten connections securely to prevent leaks during operation.


Attach the hose to the inlet of the trigger gun.

LUBRICATION

DO NOT attempt to start the pressure washer engine without filling the engine crank case with the proper amount and type of oil. (See the accompanying engine manual for this information.) Your pressure washer engine has been shipped from the factory without oil in the engine crank case. Operating the unit without oil will ruin the engine.

FUEL

Fill the tank with clean, fresh unleaded automotive gasoline. Regular grade gasoline may be used provided a high octance rating is obtained (at least 85 pump octance).

 WARNING
  
Gasoline is very dangerous. Serious injury may result from fire caused by gasoline contacting hot surfaces.

OPERATING CONNECTIONS

HIGH PRESSURE HOSE

Attach the high pressure hose to the pressure washer by pulling back the collar on the quick connect coupling on the hose and pushing it over the coupling half on the pressure washer outlet.

NOTE:DO NOT use a high pressure hose from another manufacturer.

WATER CONNECTION

Before connecting to unit,run water through the garden hose(not supplied)to flush out any foreign matter.

Attach garden hose to the pressure washer inlet.

NOTE:The water supply must provide a minimum of 4g.p.m. at 20p.s.i. or the pump will be damaged.

OPERATING INSTRUCTIONS

START-UP PROCEDURE

1. Make sure water supply is connected and turned on.
2. Release gun safety if locked.
3. To allow air to escape from the hose,squeeze trigger on the gun until there is a steady of water coming from the nozzle
4. Remove any dirt or foreign matter from the gun outlet and the male connector of the wand.
5. Insert the nozzle wand into the gun wand and tighten the twistfast fitting securely by hand.



WARNING



If the wand is not securely locked into place,it could be ejected under high pressure when operation the gun, possibly causing injury or damage.

STARTING THE ENGINE

1. Check oil and fuel level.
2. Adjust choke prime as necessary.
3. Set the engine switch to the "ON" position.
4. Squeeze trigger on pressure washer to release pressure while pulling on the engine starter rope with a fast steady pull. Pressure may otherwise build up making starting the unit difficult.
5. As the engine warm up, readjust the choke.

CHEMICAL INJECTION



CAUTION

This pressure washer is intened for use only with liquid car wash detergents, developed specifically for pressure washer and with mild soaps.

Only use chemicals compatible with the aluminum and brass parts of the pressure washer. Powdered soaps may clog the injection system, Always use chemicals according to manufacturer direction. The manufacturer assumes no responsibility for any damages cased by chemicals injected through this pressure washer.

1. Attach injection tube assembly to the siphon injector on the pump.
2. Open a container of Pressure Washer Chemical and place next to the unit near the injection tube.
3. Visually inspect strainer at the end of the injeuction tube to verify that it is not clogged.
4. Insert the injection tube into the container all the way to the bottom.
5. Remove the high pressure nozzle from the wand and install the black injection nozzle,the solution will automatically be mixed with the water and discharged through the nozzle.

NOTE: 1. For certain models,if the engine throttle is not in the "fast" position,the injection of the solution may be decreased or stopped.

CLEANING TECHNIQUES

Cleaning Techniques

When cleaning with the pressure washer, many cleaning tasks can be solved with water alone, but for most tasks it is advantageous to use a detergent also. A detergent ensures a quick soaking of the dirt allowing the high pressure water to penetrate and remove the dirt more effectively.

APPLICATION OF SOAP OR DEGREASER

1. Apply the solution to a DRY work surface. On a vertical surface, apply horizontally from side starting from the bottom to avoid streaking.

NOTE: Wetting the surface first is not recommended, as it dilutes the detergent and reduces its cleaning ability. Avoid working on hot surfaces or in direct sunlight to minimize the chances of the chemical damaging painted surface. Damage may occur to painted surface if chemical is allowed to dry on the surface. Hold nozzle far enough away from surface to prevent damage to the surface.

2. Allow chemical to remain on the surface for a short time before rinsing.

3. Rinse with clean water under high pressure. On a vertical surface, first rinse from the bottom up, then rinse from the top down. Hold nozzle 6 to 8 inches from the work surface at a 45° angle using the flat spray as a peeling tool rather than a scrub brush.

APPLICATION OF WAX

1. Immediately after cleaning your project, apply Pressure Washer Wax. Place injection tube in container of wax.

2. Apply the wax sparingly in an even layer. Apply to wet surfaces from the bottom up for even distribution and to avoid streaking.

3. Remove the suction tube from the wax bottle and rinse off the surplus wax.

NOTE: IF SURPLUS WAX IS NOT REMOVED, A HAZY FINISH MAY RESULT.

4. Wipe dry to reduce water spotting.

END OF OPERATION

End of Operation

When you have completed use of the chemical injection system, remove tube from container. Continue to run in low pressure position and inject clean water through the tube and injection system by placing end of tube in a container of clean water. Continue to run until it is thoroughly cleaned.

MAINTENANCE

CONNECTIONS

Connections on pressure washer hose, gun and spray wand should be cleaned regularly and lubricated with the manufacturer's recommended grease to prevent leakage and damage to the o-rings.

Clogging of the nozzle causes the pump pressure to be too high and cleaning is immediately required.



WARNING



A nozzle clean must only be used when the spray wand is disconnected from the gun or personal injury could result.

1. Separate the wand from the gun..
2. Clear the nozzle with a small rigid piece of wire such as a paper clip.
3. Flush the nozzle back wards with water.
4. Reconnect the wand to the gun..

Restart the pressure washer and depress the trigger on the spray gun. If the nozzle is still plugged or partially plugged, repeat above items 1-4.

If the previous procedure does not clear the nozzle, repeat with a new nozzle.

WATER SCREEN

The pressure washer is equipped with a water inlet screen to protect the pump. If the screen is not kept clean, it will restrict the flow of water to the pressure washer and may cause damage to the pump. Do not damage the screen while removing or cleaning screen. Any foreign particles entering the pump may damage the pump. Do not operate pressure washer without the screen in place.

Remove the screen and backflush to remove impurities from screen. Replace immediately.

ENGINE MAINTENANCE

During the winter month, rate atmospheric conditions may develop which will cause an icing condition in the carburetor. If this develops, the engine may run rough, lose power, and may stall. This temporary condition can be overcome by deflecting some of the hot air from the engine over the carburetor area.

NOTE: Refer to the engine manufacturer's manual for service and maintenance of the engine.

STORAGE

PUMP STORAGE

If you must store your pressure washer in a location where the temperature is below 32° F, you can minimize the chance of damage to your machine by utilizing the following procedure:

1. Shut off water supply and relieve pressure in the spray gun by depressing the trigger. Disconnect the garden hose from the pressure washer, but leave the high pressure hose connected.
2. Tip the unit on its side with the inlet connection pointing up.
3. Insert a small funnel (to prevent spilling) into the inlet and pour in approximately 1/4 cut of RV antifreeze.
4. Disconnect spark plug wire.
5. Without connecting garden hose pull the recoil several times to circulate the antifreeze in the pump system. Continue to add antifreeze and pull the recoil until the antifreeze is expelled when the trigger is pulled.
6. Turn the unit upright.



CAUTION

Prior to restarting, that out any possible ice from the pressure washer hoses, spray gun and wand.

Another method of reducing risks of freeze damage is to drain your pressure washer as follow.

1. Stop the pressure washer and detach supply hose and high pressure hose. Squeeze the trigger of the discharge gun to drain all water from the wand and hose.
2. Restart the pressure washer and let it run briefly (about 5 seconds) until water no longer discharges from the high pressure outlet.

ENGINE STORAGE

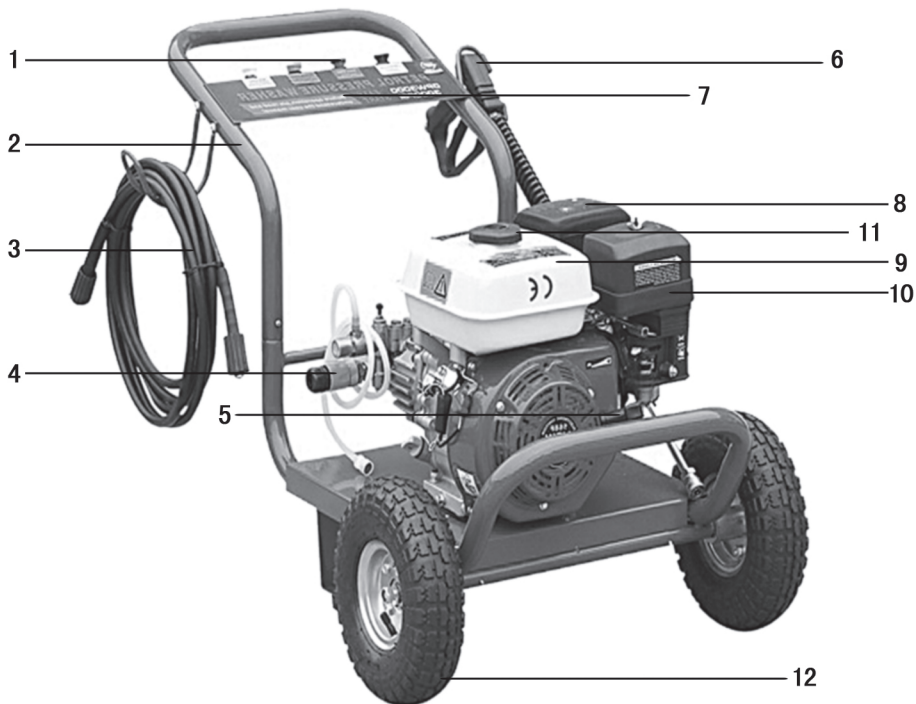
When the pressure washer is not being operated or is being stored more than one month, follow these instructions:

1. Replenish engine oil to upper level.
2. Drain gasoline from fuel tank, fuel line, fuel valve and carburettor.
3. Pour about one teaspoon of engine oil through the spark plug hole, pull the recoil starter several times and replace the plug. Then pull the starter slowly until you feel increase pressure which indicates the piston is on its compression stroke and leave it in that position. This closes both the intake and exhaust valves to prevent the inside of the cylinder from rusting.
4. Cover the pressure washer and store in a clean, dry place that is well ventilated away from open flame or sparks.

NOTE: The use of a fuel additive equivalent, will minimize the formulation of fuel gun deposits during storage. Such an additive may be added to the gasoline in the fuel tank of the engine, or to the gasoline in a storage container.

PROBLEM	POSSIBLE CAUSE	CORRECTION
Engine will not start or stop while operating	Low-oil shutdown	Fill engine with oil
	Engine switch not in the "ON" position	Turn switch :ON'
	Pressure build up in hose	Squeeze trigger
Engine is overloaded	Nozzle partially blocked	Clean nozzle
	Excessive pressure	Shorten the spring coil of the Reflux valve
Pressure increases when gun is closed	Bypass valve blocking	Cleaning the bypass valve
Engine running but pump not building maximum pressure or has irregular pressure	Faucet closed	Open faucet
	Unit has been stored in freezing temperatures	Thaw out unit completely including hose,gun and wand
	Inadequate water supply	Provide a minimum of 4gpm at 20psi
	Water inlet screen clogged	Clean screen
	Kink in garden hose	Straighten hose
	Wand nozzle worn or damage	Replace nozzle
	Air in pump	Let run with gun open and wand removed until steady stream of water is released
	Adjustable pressure knob not set to maximum position	Set to maximum position
	Suction or discharge valves clogged or worn out	Cleaning the suction or discharge valves
	By-pass valve not operating effectively	Cleaning the bypass valve
No intake of chemicals	Injection tube not securely inserten into unit	Push firmly into injector
	Yube cracked or split	Replace tubing
	Wrong nozzle	Switch to low pressure nozzle
	Injector turned off	Turn collar counter clockwise
	The axle of the inner aperture of the three way cock is differene	Use a three way cock with the imbibetion function
	Injection tube strainer clogged	Clean strainer
	Nozzle blocked	Clean nozzle
	Dried chemicals injector	Dissolve by running warm water trough the injection tube
Trigger will not move	Gun safety lock engaged	Release safety lock
Water in crankcase	High humidity	Change oil more frequently
	Worn seals	Changing the oil seal
Noisy operation	Worn bearings	Change the bear
	Air mixed with water	Check inlet lines for restriction and /or proper sizing
Rough/pulsating operation with pressure drop	Inlet restriction	Check system for stoppage,air leaks,correctly sized inlet plumbing to pump
	Unloader	Check unloader for proper operation
	Air mixed in water	Check inlet lines for restriction and/or proper sizing
High crankcase temperatures	Wrong grade of oil	Use recommended oil
	Improper amount of oil in crankcase	Adjust oil level to proper amount

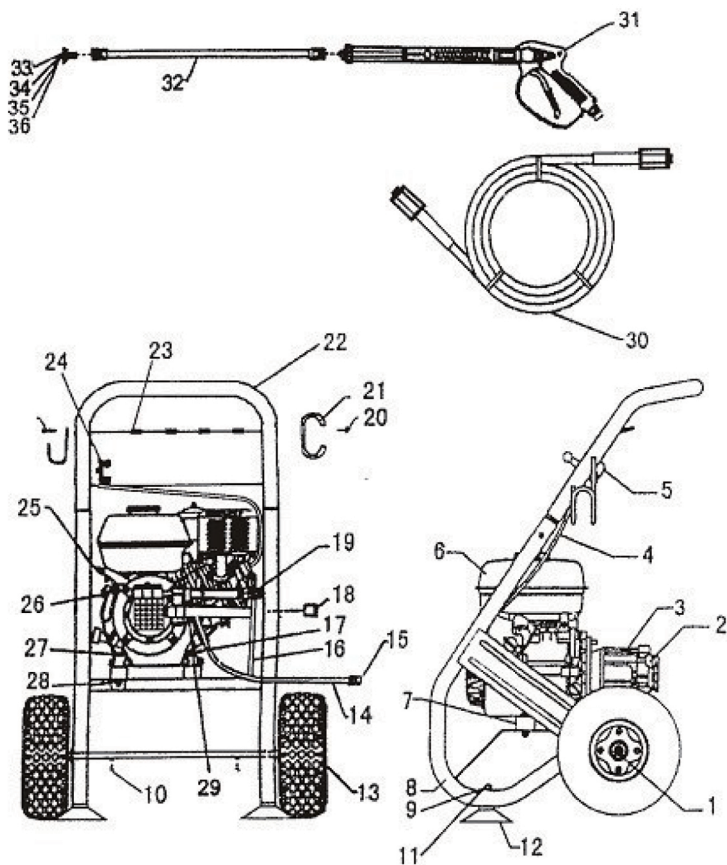
General Assembly Drawings:



VERTICAL TYPE

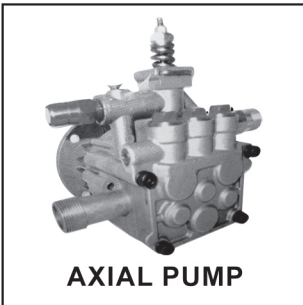
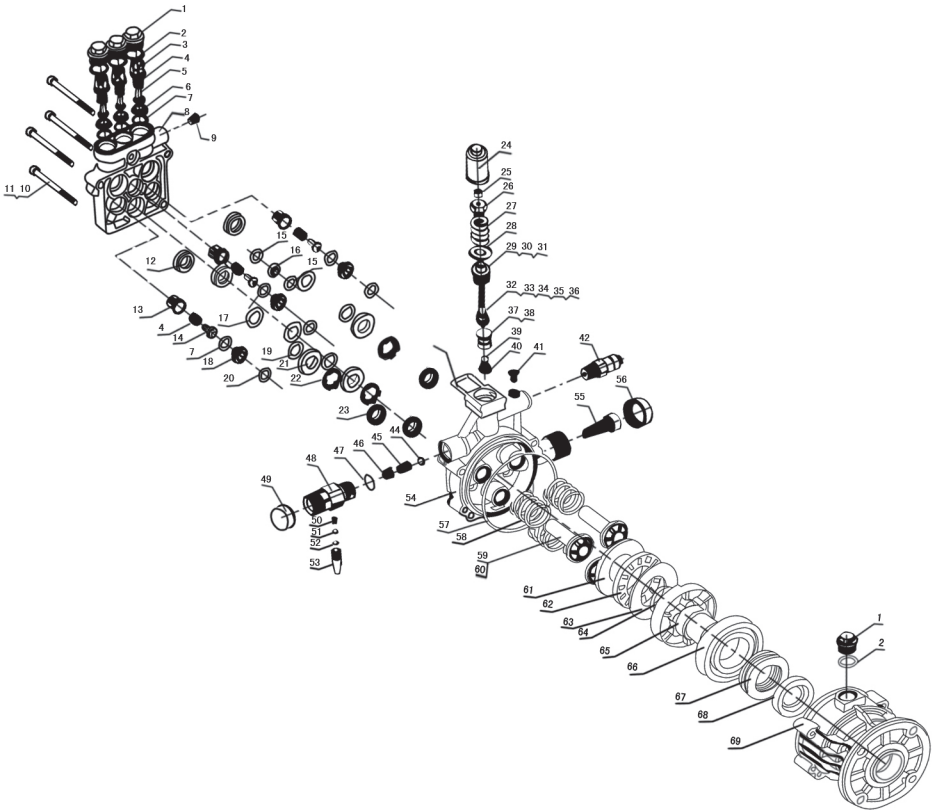
- | | | |
|--------------------|------------------|-----------------------|
| 1. nozzle | 2. frame | 3. high pressure hose |
| 4. quick connector | 5. recoil handle | 6. lance |
| 7. mark | 8. muffler assy | 9. gasoline box |
| 10. air cleaner | 11. gasoline cap | 12. tire wheel |

NOTE:It will not proved engines as replacement parts.Engines are covered through the origin manufacturer's warranty.Consult the accompanying engine manual or contact our service department for assistance.



- | | |
|--|------------------------------|
| 1 Hub cap | 19 Nut lock |
| 2 Pump assembly | 20 Screw |
| 3 Chooana cover | 21 Vinyl round cap |
| 4 Accelerator wire drawing | 22 Handle |
| 5 Component of accelerator control lever | 23 Grommet |
| 6 Engine | 24 Hex nut M5 |
| 7 Isolator | 25 Clamp |
| 8 Carrage | 26 Oil fill pump cap |
| 9 Nut M8 | 27 Bolt M8 |
| 10 Bolt M6 | 28 Nut M8 |
| 11 Bolt M8 | 29 Whip hose |
| 12 Rubber foot | 30 Hose |
| 13 Wheel | 31 Gun assy |
| 14 Chemical hose | 32 Assy wand & quick connect |
| 15 Chemical filter | 33 Nozzle Blacke |
| 16 Whiz bolt M8 | 34 Nozzle white |
| 17 Hose adapter | 35 Nozzle yellow |
| 18 Nut | 36 Nozzle black |

Exploded view of the pump



NOTES

1. There is no engine oil inside the pump before shipment;
2. After using the machine thirty hours, pls change the engine oil inside the pump. don't overfill!

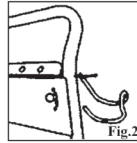
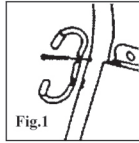
Parts list of the pump

1	cap	4	36	O ring seal 8.6×1.8	1
2	O ring seal 15.4*1.8	4	37	valve jacket	1
3	check valve,outlet	3	38	O ring seal 9.5×1.8	1
4	check valve spring	6	39	steel ball	1
5	valve rod	3	40	valve seat	1
6	cover,check valve	3	41	cross bolt	1
7	O ring seal 12.4*1.8	6	42	thermal relief cap	
8	aluminum pump cover	1	43	pin	1
9	seal bolt	1	44	O ring seal 5×2	1
10	bolt	4	45	valve rod	1
11	spring gasket	4	46	valve spring	1
12	Y seal	3	47	O ring seal	1
13	inlet check valve	3	48	T connect	1
14	valve rod	3	49	shield	1
15	O ring seal 10*2.65	2	50	cone spring	1
16	copper gasket	1	51	steel ball Φ5	1
17	gasket	3	52	O ring seal	1
18	copper gasket	3	53	valve body	1
19	gasket	3	54	pump seat	1
20	O ring seal	3	55	filter	1
21	cover board	3	56	shield	1
22	U-packing seat	3	57	O ring seal	1
23	seal,oil piston	3	58	spring	3
24	overflow valve	1	59	piston	3
25	nut	1	60	spring hold	3
26	pressure adjusting nut	1	61	upper cover	1
27	pressure adjusting spring	1	62	bearing 81207	1
28	pressure adjusting gasket	1	63	lower cover	1
29	valve cover	1	64	steel cover	1
30	O ring seal 14*1.8	1	65	cam	1
31	O ring seal 12.4*1.8	1	66	bearing 6207	1
32	valve rod assy	1	67	bearing 51206	1
33	U-packing	1	68	oil seal	1
34	O ring seal 6.07*1.8	1	69	driving box	1
35	U-packing	1			

Assembly

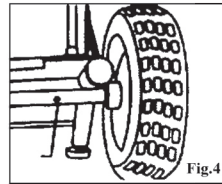
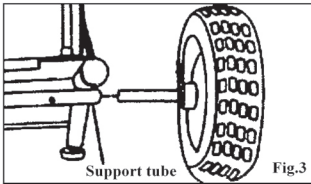
1.Installing Right/Left Hook

- 1)Fix left hook on the left side of the handrail by using bolt M5×45(See Fig.1)
- 2)Fix right hook on the right side of the handrail by using bolt M5×45(See Fig.2)



2.Installing the wheels

- 1)Hold the locating pin in the wheel set backward in horizontal level and press the locating pin into supporting tube until the click is heard, which indicates the pin clutches at the supporting tube(See Fig.3)
- 2)Unit the pin is higher than the thickness of supporting wall(See Fig.4)



START-UP PROCEDURE

PRE-START PREPARATION

Before starting the pressure washer ,check for loose or missing parts and for any damage which may have occurred during shipment.

PREPERATION

The pump is shipped with a shipping plug,this will need to be replaced with the vent plug that is supplied.

START-UP PROCEDURE

1. Be sure water supply is connected and turned on.
2. Release gun safety if locked.
3. Allow air to escape from the hose,squeeze trigger on the gun until there is a steady stream of water coming from the nozzle.
4. any dirt or foreign matter from thr gun outlet and the male connector of the wand.
5. Insert the nozzle wand into the gun wand and tighten the fitting securely.
6. Place the throttle in the high position.

STARTING THE ENGINE

1. Check oil and fuel level.
2. Adjust choke prime as necessary.
3. Set the engine switch to the "ON" position.
4. Squeeze trigger on pressure washer to release pressure while pulling on the engine starter rope with a fast steady pull.Pressure may otherwise build up making starting the unit difficult.
5. As the engine warm up ,readjust the choke.

SPRAY NOZZLE SELECTION

Following is information concerning the four nozzles provided with your pressure washer

NOTE:The force of the spray on the surface you are cleaning increases say you move closer to the surface.

0° High Pressure(Red):The water stream discharged is very aggressive.Use with extreme caution to prevent damage to the surface eing cleaned or injury to persons or animals.

15° High Pressure (Yellow):This is the nozzle used for most cleaning applications.It provides wide coverage and a powerful water stream.

45° High Pressure (White):This nozzle is used for cleaning with a wider coverage over a larger area with a powerful water stream.

50° Low Pressure(Black):Provides low pressure spray and a wide coverage.Used primarily when operating the chemical injector to apply chemicals.

SPECIFICATIONS

Maximum Inlet Pressure..... Up to 90 PSI
 RPM 3450RPM
 Temperature of Pumped Fluids..... Up to 80° F
 Inlet Ports.....(2) 1/2" BSP
 Discharge Ports.....(1) 3/8" BSP
 Weight.....9lbs
 Crankcase oil Capacity..... 4.7fl.oz.
 Pump oil.....SAE 30W Nondetergent

Consult the factory for special requirements that must be met if the pump is to operate beyond one or more of the limits specified above.

SERIES TORQUE SPECIFICATIONS

Item	Description	Torque-Amount
10	Socket Bolt	100 in-lbs.
40	Stud Bolt	150 in-lbs.

SERIES REPAIR KITS

- Oil Seat Kit
- Regulator Repair Kit
- Plunger Packing Kit
- Valve Assembly Kit
- Gasoline Flange Kit
- Wobble Plate 6.3 Degree Kit
- Flage Adapting Kit

OPERATING CONNECTIONS

HIGH PRESSURE HOSE

Attach the high pressure hose to the fitting located on the front side of the side panel. Only high quality Pressure Washer hose should be used.

WATER CONNECTION

Before connecting the inlet hose to the unit, run water through the garden hose (not supplied) to flush out any foreign matter. The inlet hose will be connected to the fitting located on the back of this side panel.

NOZZLE MAINTENANCE

It is quite normal for the nozzle to get clogged due to debris entering the pump. This can happen when the washer is first used due to debris that has entered the hose. To unblock the nozzle, follow these 2 easy steps as indicated in the diagram below.

1. Remove the nozzle from the lance.
2. Push the wire pin into the end of the nozzle, allowing the debris to fall from its base.

!!KEEP WIRE PIN AWAY FROM CHILDREN

